

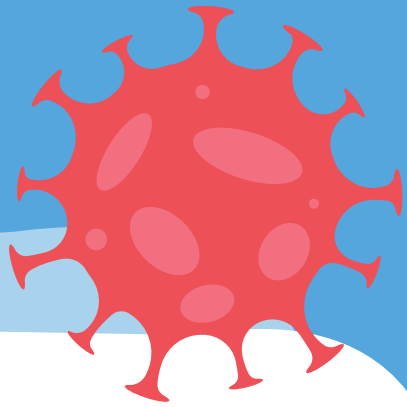


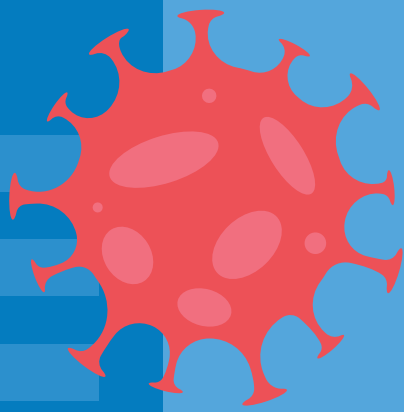
**Shahlon**  
GROUP



**Laxmipati**  
GROUP

# **FIGHT AGAINST COVID-19**



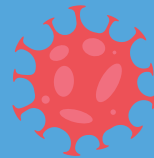


This is a joint venture between  
**Shahlon Silk Industries Ltd.** and  
**Siddhivinayak Knots & Prints Pvt Ltd.**

We are working towards **fighting**  
against the COVID-19 crisis by helping  
to provide necessary safety kits  
used to **fight against biological**  
**agents** which have been declared  
as **essential commodities** by the  
Ministry of Textiles, India.



## ALL THE DETAILS



### FABRICS

NON-WOVEN/  
WOVEN

3-5

### PPE KITS

NON-WOVEN/  
WOVEN

6-8

### COVERALLS

NON-WOVEN/  
WOVEN

9

### GOWNS

SHORT GOWN/  
LONG GOWN/  
OVERLAP GOWN

10

### FACE MASK & SHIELD

11

### SHOE COVER & SALON KIT

12

### BED SET & CURTAINS

13



# FABRIC:

## PP SPUN BOND NON-WOVEN (NON-LAMINATED)

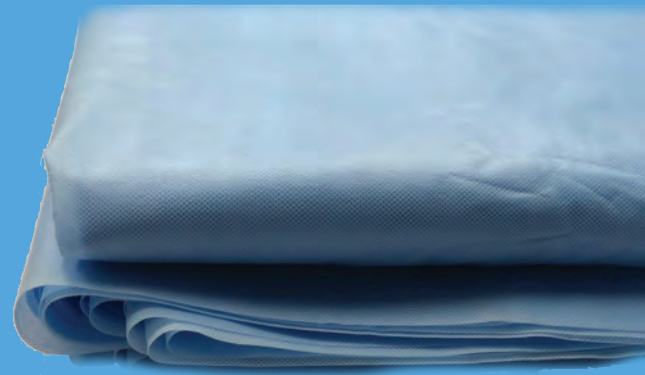


WEIGHT:

**25GSM | 35GSM | 45GSM |  
50GSM | 70GSM | 90GSM**

COLOR:

**WHITE OR MEDICAL BLUE**



### FEATURES:

Products with finer and submicron fibers for **better cover, bulk & soft feel**

**Solid Particle**  
Resistant

### Applications in:



Medical  
Industry



Pharma  
Industry



Automobile  
Industry



Hospitality



Furnishing

# FABRIC:

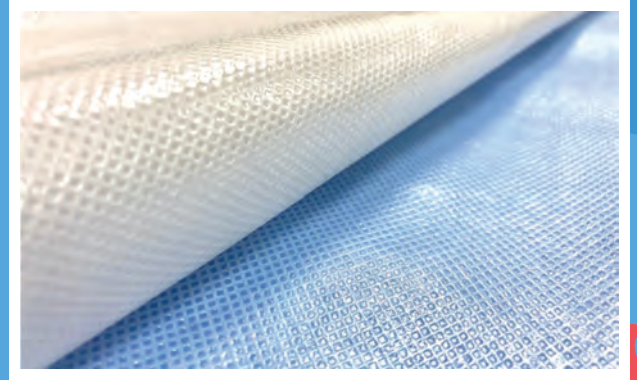
## PP SPUN BOND NON-WOVEN (LAMINATED)

WEIGHT:

**45GSM | 70GSM | 90GSM**

COLOR:

**WHITE OR MEDICAL BLUE**



### FEATURES:

Products with finer and submicron fibers for **better cover, bulk & soft feel**

Bi-layer fabric for **better strength and less lint**

Laminated spunlace fabric for both; **grey and dyed in colors.**



**SITRA** certified

### Applications in:



Medical Industry



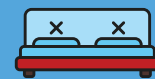
Pharma Industry



Automobile Industry



Hospitality



Furnishing

### Advantages:



Synthetic Blood Resistant



Solid Particles Resistant



Easily Disposable



Water Repellent & Resistant

# FABRIC:

## REUSABLE PPE WOVEN FABRIC (COATED)



WEIGHT:  
**85GSM**

COLOR:  
**WHITE OR DYED**



### FEATURES:

**Lightweight,  
Breathable** Fabric

**Blood  
Resistant** Fabric

**Water Repellent  
and Water Resistant**

**Easy to clean** and  
can be **auto-claved**

**Anti Bacterial  
and Anti Microbial**



**SITRA**  
certified

### Applications in:



Medical  
Industry



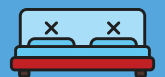
Pharma  
Industry



Automobile  
Industry



Hospitality



Furnishing

# PPE KIT: NON-WOVEN (NON-LAMINATED)



**FABRIC:**  
**PP SPUN BOND NON-LAMINATED**

**WEIGHT:**  
**45GSM | 70GSM | 90GSM**

**COLOR:**  
**WHITE OR MEDICAL BLUE**

**SIZE:**  
**SMALL - EXTRA LARGE**

**SEAM TYPE:**  
**WITH OR WITHOUT SEAM SEALING**

## WHAT'S INCLUDED?

**COVERALL**  
SUIT WITH HOOD  
**1 PIECE**

**HAND**  
GLOVES  
**1 PAIR**

**3-PLY**  
FACE MASK  
**1 PIECE**

**SHOE**  
COVER  
**1 PAIR**

**FACE**  
SHIELD  
**1 PIECE**

**WASTE**  
DISPOSAL BAG  
**1 PIECE**



## Advantages:



Solid  
Particles  
Resistant



Easily  
Disposable

# PPE KIT: NON-WOVEN (LAMINATED)

FABRIC:

**PP SPUN BOND LAMINATED (SITRA CERTIFIED)**

WEIGHT:

**45GSM | 70GSM | 90GSM**

COLOR:

**WHITE OR MEDICAL BLUE**

SIZE:

**SMALL - EXTRA LARGE**

SEAM TYPE:

**WITH OR WITHOUT SEAM SEALING**

## WHAT'S INCLUDED?

**COVERALL**  
SUIT WITH HOOD

**1 PIECE**

**HAND**  
GLOVES

**1 PAIR**

**3-PLY**  
FACE MASK

**1 PIECE**

**SHOE**  
COVER

**1 PAIR**

**FACE**  
SHIELD

**1 PIECE**

**WASTE**  
DISPOSAL BAG

**1 PIECE**



## Advantages:



Synthetic  
Blood  
Resistant



Solid  
Particles  
Resistant



Easily  
Disposable



Water  
Repellent &  
Resistant



# PPE KIT: WOVEN (COATED)



FABRIC:

**REUSABLE PPE WOVEN COATED (SITRA CERTIFIED)**

WEIGHT:

**85GSM**

COLOR:

**WHITE OR DYED**

SIZE:

**SMALL - EXTRA LARGE**

SEAM TYPE:

**WITH OR WITHOUT SEAM SEALING**

## WHAT'S INCLUDED?

### COVERALL

SUIT WITH HOOD

**1 PIECE**

### HAND

GLOVES

**1 PAIR**

### 3-PLY

FACE MASK

**1 PIECE**

### SHOE

COVER

**1 PAIR**

### FACE

SHIELD

**1 PIECE**

### WASTE

DISPOSAL BAG

**1 PIECE**



## Advantages:



Synthetic  
Blood  
Resistant



Solid  
Particles  
Resistant



Water  
Repellent &  
Resistant



Anti  
Bacterial  
and Anti  
Microbial



Reusable  
and can be  
autoclaved



# COVERALLS

(SOLD SEPARATELY AS WELL)



FABRIC OPTIONS:  
**NON-WOVEN | WOVEN**

WEIGHT:  
**70GSM | 90GSM (NON-WOVEN)  
85GSM (WOVEN)**

COLOR:  
**WHITE OR MEDICAL BLUE**

SIZE:  
**SMALL - EXTRA LARGE**



**COVERALL**  
WITH HOOD +  
SHOE COVER  
**WITHOUT SEAM  
SEALING**



**COVERALL**  
WITH HOOD +  
SHOE COVER  
**WITH SEAM  
SEALING**

# **GOWNS** (SOLD SEPARATELY AS WELL)

FABRIC OPTIONS:  
**NON-WOVEN | WOVEN**

WEIGHT:  
**45GSM | 70GSM | 90GSM (NON-WOVEN)  
85GSM (WOVEN)**

COLOR:  
**WHITE OR MEDICAL BLUE**

SIZE:  
**SMALL - EXTRA LARGE**



**LONG**  
GOWN WITH CAP



**SHORT**  
GOWN WITH  
PYJAMA & CAP



**OVERLAP**  
SURGEON GOWN

# DISPOSABLE FACE SHIELD

(SOLD SEPARATELY AS WELL)



## FEATURES:

**Fully adjustable headgear** with elastic/velcro tape

**180 degree** Forehead & Face Protection

# DISPOSABLE 3-PLY SMS FACE MASK

(SOLD SEPARATELY AS WELL)

## FEATURES:

Highly efficient **bacteria filtration** middle layer

**99.8% BFE** (Bacterial Filtration Efficiency)

**Excellent barrier** from sneeze generated fluid particles

**Soft inner layer** fabric for anti-skin rash

Filters PM **2.5 particulate matter**



# DISPOSABLE SHOE COVER

(SOLD SEPARATELY AS WELL)

FABRIC:  
**100% VIRGIN NON-WOVEN**

WEIGHT:  
**70GSM | 90GSM**

COLOR:  
**WHITE OR MEDICAL BLUE**

**TWO STYLES AVAILABLE**



**WITHOUT  
SEAM SEALING**



**WITH SEAM  
SEALING**

# DISPOSABLE SALON KIT

**NON-WOVEN  
CAPE WITH TOWEL**

**1 PIECE EACH**



# DISPOSABLE BED SET

## **NON-WOVEN BEDSHEET**

WITH PILLOW  
COVER

**1 PIECE EACH**

PILLOW SIZE:  
**17 x 24 INCHES**

BEDSHEET SIZE:  
**45 x 85 INCHES**

COLOR:  
**WHITE OR MEDICAL BLUE**







**THANK YOU  
FOR YOUR TIME!**

**GET IN TOUCH TO  
PLACE YOUR ORDERS**



**Shahlon**  
GROUP

**Shahlon Silk Industries Ltd.**

91, G.I.D.C., Khatodara,  
Behind Sub Jail, Ring Road,  
Surat - 395002. Gujarat. India.  
Tel: **+91-261-4190200 / +91-99788-99969**  
Email: **info@shahlon.com**



**Siddhi Vinayak Knots & Prints Pvt Ltd**

A 26-32, Central Park, G.I.D.C., Pandesara,  
Surat - 394221. Gujarat. India.  
Tel: **+91-261-2894415 / +91-93760-14032**  
Email: **info@laxmipati.com**